

AN ISO 25 INOX-INOX

DOPPIAPARETE INOX ISO 25 AISI 316L

Elemento lineare 1000 mm

gsv 21



| CODICE | € pz. | Øi | Øe | |
|----------|--------|-----|-----|---|
| I2501080 | 85,06 | 80 | 130 | ✓ |
| I2501100 | 99,15 | 100 | 150 | ✓ |
| I2501130 | 117,71 | 130 | 180 | ✓ |
| I2501150 | 131,39 | 150 | 200 | ✓ |
| I2501180 | 150,32 | 180 | 230 | ✓ |
| I2501200 | 165,09 | 200 | 250 | ✓ |
| I2501250 | 203,32 | 250 | 300 | ✓ |
| I2501300 | 237,13 | 300 | 350 | ✓ |

Elemento lineare 500 mm

gsv 21



| CODICE | € pz. | Øi | Øe | |
|----------|--------|-----|-----|---|
| I2502080 | 54,94 | 80 | 130 | ✓ |
| I2502100 | 62,16 | 100 | 150 | ✓ |
| I2502130 | 73,40 | 130 | 180 | ✓ |
| I2502150 | 81,11 | 150 | 200 | ✓ |
| I2502180 | 90,57 | 180 | 230 | ✓ |
| I2502200 | 99,82 | 200 | 250 | ✓ |
| I2502250 | 119,79 | 250 | 300 | ✓ |
| I2502300 | 139,06 | 300 | 350 | ✓ |

Elemento lineare 330 mm

gsv 21



| CODICE | € pz. | Øi | Øe | |
|----------|--------|-----|-----|---|
| I2503080 | 43,46 | 80 | 130 | ✓ |
| I2503100 | 48,27 | 100 | 150 | ✓ |
| I2503130 | 56,21 | 130 | 180 | ✓ |
| I2503150 | 61,99 | 150 | 200 | ✓ |
| I2503180 | 69,04 | 180 | 230 | ✓ |
| I2503200 | 76,93 | 200 | 250 | ✓ |
| I2503250 | 89,84 | 250 | 300 | ✓ |
| I2503300 | 102,66 | 300 | 350 | ✓ |

Elemento lineare 250 mm

gsv 21



| CODICE | € pz. | Øi | Øe | |
|----------|-------|-----|-----|---|
| I2505080 | 41,62 | 80 | 130 | ✓ |
| I2505100 | 46,22 | 100 | 150 | ✓ |
| I2505130 | 53,90 | 130 | 180 | ✓ |
| I2505150 | 59,42 | 150 | 200 | ✓ |
| I2505180 | 66,20 | 180 | 230 | ✓ |
| I2505200 | 73,73 | 200 | 250 | ✓ |
| I2505250 | 86,11 | 250 | 300 | ✓ |
| I2505300 | 98,41 | 300 | 350 | ✓ |

Elemento telescopico/ regolabile 260 - 390 mm

gsv 01



| CODICE | € pz. | Øi | Øe | |
|----------|--------|-----|-----|---|
| I2509080 | 79,29 | 80 | 130 | ✓ |
| I2509100 | 87,95 | 100 | 150 | ✓ |
| I2509130 | 95,45 | 130 | 180 | ✓ |
| I2509150 | 104,07 | 150 | 200 | ✓ |
| I2509180 | 121,75 | 180 | 230 | ✓ |
| I2509200 | 128,32 | 200 | 250 | ✓ |
| I2509250 | 150,74 | 250 | 300 | ✓ |
| I2509300 | 180,32 | 300 | 350 | ✓ |

Per TENUTA P1 utilizzare 2 guarnizioni: 1 stesso DN della canna fumaria e 1 di un DN inferiore della canna fumaria

Elemento prelievo fumi monoforo

gsv 01



| CODICE | € pz. | Øi | Øe | |
|----------|--------|-----|-----|---|
| I2595080 | 90,74 | 80 | 130 | ✓ |
| I2595100 | 97,04 | 100 | 150 | ✓ |
| I2595130 | 108,86 | 130 | 180 | ✓ |
| I2595150 | 116,01 | 150 | 200 | ✓ |
| I2595180 | 128,47 | 180 | 230 | ✓ |
| I2595200 | 138,48 | 200 | 250 | ✓ |
| I2595250 | 158,94 | 250 | 300 | ✓ |
| I2595300 | 177,58 | 300 | 350 | ✓ |

Tappo per prelievo fumi

gsv 01



| CODICE | € pz. | |
|----------|-------|---|
| I2595000 | 29,93 | ✓ |

Elemento lineare con saracinesca

gsv 01



| CODICE | € pz. | Øi | Øe | |
|----------|--------|-----|-----|---|
| I2597080 | 351,88 | 80 | 130 | ✓ |
| I2597100 | 351,88 | 100 | 150 | ✓ |
| I2597130 | 387,30 | 130 | 180 | ✓ |
| I2597150 | 442,38 | 150 | 200 | ✓ |
| I2597180 | 497,40 | 180 | 230 | ✓ |
| I2597200 | 497,40 | 200 | 250 | ✓ |
| I2597250 | 718,57 | 250 | 300 | ✓ |
| I2597300 | 718,57 | 300 | 350 | ✓ |

Elemento prelievo fumi due fori con termometro

gsv 01



| CODICE | € pz. | Øi | Øe | |
|-----------|--------|-----|-----|---|
| I25980801 | 149,59 | 80 | 130 | ✓ |
| I25981001 | 160,95 | 100 | 150 | ✓ |
| I25981301 | 181,60 | 130 | 180 | ✓ |
| I25981501 | 196,47 | 150 | 200 | ✓ |
| I25981801 | 219,22 | 180 | 230 | ✓ |
| I25982001 | 231,18 | 200 | 250 | ✓ |
| I25982501 | 263,71 | 250 | 300 | ✓ |
| I25983001 | 297,18 | 300 | 350 | ✓ |

Elemento prelievo fumi con termometro e piastra

gsv 01



| CODICE | € pz. | Øi | Øe | |
|----------|--------|-----|-----|---|
| I2598080 | 331,52 | 80 | 130 | ✓ |
| I2598100 | 356,74 | 100 | 150 | ✓ |
| I2598130 | 338,87 | 130 | 180 | ✓ |
| I2598150 | 347,63 | 150 | 200 | ✓ |
| I2598180 | 367,48 | 180 | 230 | ✓ |
| I2598200 | 376,30 | 200 | 250 | ✓ |
| I2598250 | 408,39 | 250 | 300 | ✓ |
| I2598300 | 438,63 | 300 | 350 | ✓ |

Elemento ispezione con portello

gsv 01



TENUTA N1

| CODICE | € pz. | Øi | Øe | |
|----------|--------|-----|-----|---|
| I2511080 | 261,69 | 80 | 130 | ✓ |
| I2511100 | 270,69 | 100 | 150 | ✓ |
| I2511130 | 247,41 | 130 | 180 | ✓ |
| I2511150 | 255,01 | 150 | 200 | ✓ |
| I2511180 | 272,14 | 180 | 230 | ✓ |
| I2511200 | 279,81 | 200 | 250 | ✓ |
| I2511250 | 336,51 | 250 | 300 | ✓ |
| I2511300 | 362,61 | 300 | 350 | ✓ |

Elemento ispezione con tappo

gsv 01



TENUTA P1

| CODICE | € pz. | Øi | Øe | |
|----------|--------|-----|-----|---|
| I2575080 | 119,05 | 80 | 130 | ✓ |
| I2575100 | 131,96 | 100 | 150 | ✓ |
| I2575130 | 165,69 | 130 | 180 | ✓ |
| I2575150 | 179,40 | 150 | 200 | ✓ |
| I2575180 | 219,49 | 180 | 230 | ✓ |
| I2575200 | 237,83 | 200 | 250 | ✓ |
| I2575250 | 283,01 | 250 | 300 | ✓ |
| I2575300 | 319,35 | 300 | 350 | ✓ |



AN ISO 25 INOX-INOX

Raccordo a T 90°
con ispezione lato
opposto T 200°

gsv 01



| CODICE | € pz. | Øi | Øe | |
|-----------|--------|-----|-----|---|
| I25200801 | 320,17 | 80 | 130 | ✓ |
| I25201001 | 352,36 | 100 | 150 | ✓ |
| I25201301 | 439,10 | 130 | 180 | ✓ |
| I25201501 | 473,30 | 150 | 200 | ✓ |
| I25201801 | 572,48 | 180 | 230 | ✓ |
| I25202001 | 619,15 | 200 | 250 | ✓ |
| I25202501 | 799,37 | 250 | 300 | ✓ |
| I25203001 | 896,75 | 300 | 350 | ✓ |

Raccordo a T 90°
con ispezione lato
opposto T 600°

gsv 01



| CODICE | € pz. | Øi | Øe | |
|-----------|--------|-----|-----|---|
| I25200802 | 345,78 | 80 | 130 | ✓ |
| I25201002 | 380,54 | 100 | 150 | ✓ |
| I25201302 | 474,24 | 130 | 180 | ✓ |
| I25201502 | 511,15 | 150 | 200 | ✓ |
| I25201802 | 618,26 | 180 | 230 | ✓ |
| I25202002 | 668,70 | 200 | 250 | ✓ |
| I25202502 | 863,31 | 250 | 300 | ✓ |
| I25203002 | 968,51 | 300 | 350 | ✓ |

Tappo per basse
temperature T 200°

gsv 04



PEZZO DI RICAMBIO

TENUTA P1

| CODICE | € pz. | Øi | Øe | |
|----------|-------|-----|-----|---|
| M5750801 | 28,07 | 80 | 130 | ✓ |
| M5751001 | 32,12 | 100 | 150 | ✓ |
| M5751301 | 37,66 | 130 | 180 | ✓ |
| M5751501 | 41,59 | 150 | 200 | ✓ |
| M5751801 | 54,73 | 180 | 230 | ✓ |
| M5752001 | 59,29 | 200 | 250 | ✓ |

Tappo per alte
temperature T 600°

gsv 04



PEZZO DI RICAMBIO

TENUTA N1

| CODICE | € pz. | Øi | Øe | |
|----------|-------|-----|-----|---|
| M5750802 | 48,74 | 80 | 130 | ✓ |
| M5751002 | 51,12 | 100 | 150 | ✓ |
| M5751302 | 57,94 | 130 | 180 | ✓ |
| M5751502 | 64,84 | 150 | 200 | ✓ |
| M5751802 | 74,49 | 180 | 230 | ✓ |
| M5752002 | 82,15 | 200 | 250 | ✓ |

Raccordo a T 90°

gsv 01



| CODICE | € pz. | Øi | Øe | |
|----------|--------|-------|-----|---|
| I2520080 | 102,72 | ■ 80 | 130 | ✓ |
| I2520100 | 112,10 | ■ 100 | 150 | ✓ |
| I2520130 | 138,44 | ● 130 | 180 | ✓ |
| I2520150 | 148,43 | ● 150 | 200 | ✓ |
| I2520180 | 177,04 | ● 180 | 230 | ✓ |
| I2520200 | 191,05 | ● 200 | 250 | ✓ |
| I2520250 | 270,69 | ● 250 | 300 | ✓ |
| I2520300 | 301,83 | ▲ 300 | 350 | ✓ |

■ H utile = 270 mm

● H utile = 440 mm

▲ H utile = 490 mm

Raccordo a T 90°
derivazione 80 mm

gsv 01



| CODICE | € pz. | Øi | Øe | |
|----------|--------|-----|-----|---|
| I2522080 | 89,02 | 80 | 130 | ✓ |
| I2522100 | 96,04 | 100 | 150 | ✓ |
| I2522130 | 102,32 | 130 | 180 | ✓ |
| I2522150 | 110,97 | 150 | 200 | ✓ |
| I2522180 | 138,78 | 180 | 230 | ✓ |
| I2522200 | 148,47 | 200 | 250 | ✓ |
| I2522250 | 194,27 | 250 | 300 | ✓ |
| I2522300 | 220,98 | 300 | 350 | ✓ |

H utile = 190 mm

DOPPIAPARETE INOX ISO 25 AISI 316L

Raccordo a T 135°

gsv 01



| CODICE | € pz. | Øi | Øe | |
|----------|--------|-----|-----|---|
| I2521080 | 250,79 | 80 | 130 | ✓ |
| I2521100 | 269,29 | 100 | 150 | ✓ |
| I2521130 | 337,34 | 130 | 180 | ✓ |
| I2521150 | 349,30 | 150 | 200 | ✓ |
| I2521180 | 385,07 | 180 | 230 | ✓ |
| I2521200 | 447,08 | 200 | 250 | ✓ |
| I2521250 | 568,43 | 250 | 300 | ✓ |
| I2521300 | 638,84 | 300 | 350 | ✓ |

Raccordo a T 87°

gsv 01



| CODICE | € pz. | Øi | Øe | |
|-----------|--------|-----|-----|---|
| I2520080C | 112,99 | 80 | 130 | ✓ |
| I2520100C | 123,31 | 100 | 150 | ✓ |
| I2520130C | 152,29 | 130 | 180 | ✓ |
| I2520150C | 163,28 | 150 | 200 | ✓ |
| I2520180C | 194,75 | 180 | 230 | ✓ |
| I2520200C | 210,16 | 200 | 250 | ✓ |
| I2520250C | 297,76 | 250 | 300 | ✓ |
| I2520300C | 332,02 | 300 | 350 | ✓ |

Raccordo a T 87°
derivazione 80 mm

gsv 01



| CODICE | € pz. | Øi | Øe | |
|-----------|--------|-----|-----|---|
| I2522080C | 97,92 | 80 | 130 | ✓ |
| I2522100C | 105,65 | 100 | 150 | ✓ |
| I2522130C | 112,55 | 130 | 180 | ✓ |
| I2522150C | 122,07 | 150 | 200 | ✓ |
| I2522180C | 152,66 | 180 | 230 | ✓ |
| I2522200C | 163,32 | 200 | 250 | ✓ |
| I2522250C | 213,71 | 250 | 300 | ✓ |
| I2522300C | 243,09 | 300 | 350 | ✓ |

Raccordo a T per
apertura
compensazione
completo di griglia

gsv 01



| CODICE | € pz. | Øi | Øe | |
|-----------|--------|-----|-----|---|
| I2522080A | 140,91 | 80 | 130 | ✓ |
| I2522100A | 147,92 | 100 | 150 | ✓ |
| I2522130A | 154,20 | 130 | 180 | ✓ |
| I2522150A | 162,87 | 150 | 200 | ✓ |
| I2522180A | 190,67 | 180 | 230 | ✓ |
| I2522200A | 200,36 | 200 | 250 | ✓ |
| I2522250A | 246,16 | 250 | 300 | ✓ |
| I2522300A | 272,87 | 300 | 350 | ✓ |

Raccordo a T 90°
con uscita coassiale
Ø 60-100

gsv 01



| CODICE | € pz. | Øi | Øe | |
|--------------|--------|-----|-----|---|
| I2522080A060 | 195,24 | 80 | 130 | ✓ |
| I2522100A060 | 203,79 | 100 | 150 | ✓ |
| I2522130A060 | 242,16 | 130 | 180 | ✓ |
| I2522150A060 | 247,66 | 150 | 200 | ✓ |
| I2522180A060 | 278,79 | 180 | 230 | ✓ |
| I2522200A060 | 298,41 | 200 | 250 | ✓ |
| I2522250A060 | 385,44 | 250 | 300 | ✓ |
| I2522300A060 | 406,65 | 300 | 350 | ✓ |

Raccordo a T 90°
con uscita coassiale
Ø 80-125

gsv 01



| CODICE | € pz. | Øi | Øe | |
|--------------|--------|-----|-----|---|
| I2522080A080 | 195,24 | 80 | 130 | ✓ |
| I2522100A080 | 203,79 | 100 | 150 | ✓ |
| I2522130A080 | 242,16 | 130 | 180 | ✓ |
| I2522150A080 | 247,66 | 150 | 200 | ✓ |
| I2522180A080 | 278,79 | 180 | 230 | ✓ |
| I2522200A080 | 298,41 | 200 | 250 | ✓ |
| I2522250A080 | 385,44 | 250 | 300 | ✓ |
| I2522300A080 | 406,65 | 300 | 350 | ✓ |



AN ISO 25 INOX-INOX

Tappo con drenaggio 3/4"

gsv 01



| CODICE | € pz. | Øi | Øe | |
|----------|--------|-----|-----|---|
| I2529080 | 65,77 | 80 | 130 | ✓ |
| I2529100 | 67,95 | 100 | 150 | ✓ |
| I2529130 | 81,61 | 130 | 180 | ✓ |
| I2529150 | 87,69 | 150 | 200 | ✓ |
| I2529180 | 97,43 | 180 | 230 | ✓ |
| I2529200 | 107,96 | 200 | 250 | ✓ |
| I2529250 | 128,05 | 250 | 300 | ✓ |
| I2529300 | 141,79 | 300 | 350 | ✓ |

Tappo scarico condensa laterale

gsv 01



| CODICE | € pz. | Øi | Øe | |
|-----------|--------|-----|-----|---|
| I2529080A | 92,07 | 80 | 130 | ✓ |
| I2529100A | 95,13 | 100 | 150 | ✓ |
| I2529130A | 114,25 | 130 | 180 | ✓ |
| I2529150A | 122,76 | 150 | 200 | ✓ |
| I2529180A | 136,41 | 180 | 230 | ✓ |
| I2529200A | 151,15 | 200 | 250 | ✓ |
| I2529250A | 179,27 | 250 | 300 | ✓ |
| I2529300A | 198,51 | 300 | 350 | ✓ |

Tappo ottone nichelato dn 3/4" femmina compreso di guarnizione

gsv 18



| CODICE | € pz. | Q.tà | Ø | |
|----------|-------|------|---|---|
| M025080Z | 4,77 | | | ✓ |

Regolatore di tiraggio con adattatore maschio

gsv 15



| CODICE | € pz. | Øi | Øe | |
|---------|--------|-----|-----|---|
| REG130M | 258,68 | 80 | 130 | ✓ |
| REG150M | 258,68 | 100 | 150 | ✓ |
| REG180M | 258,68 | 130 | 180 | ✓ |
| REG200M | 263,17 | 150 | 200 | ✓ |
| REG230M | 265,43 | 180 | 230 | ✓ |
| REG250M | 272,17 | 200 | 250 | ✓ |
| REG300M | 272,17 | 250 | 300 | ✓ |
| REG350M | 285,67 | 300 | 350 | ✓ |

Regolatore di tiraggio Ø 150

gsv 15



| CODICE | € pz. | Øi | Øe | |
|--------|--------|-----|----|---|
| MOD150 | 190,89 | 150 | | ✓ |

ACCESSORIO ADATTABILE

Adattatore mono (M) doppia parete (F) (raccordo caldaia)

gsv 01



| CODICE | € pz. | Øi | Øe | |
|-------------|--------|-----|-----|---|
| I2568080080 | 46,41 | 80 | 130 | ✓ |
| I2568100100 | 51,03 | 100 | 150 | ✓ |
| I2568130130 | 59,42 | 130 | 180 | ✓ |
| I2568150150 | 67,64 | 150 | 200 | ✓ |
| I2568180180 | 75,20 | 180 | 230 | ✓ |
| I2568200200 | 81,50 | 200 | 250 | ✓ |
| I2568250250 | 94,44 | 250 | 300 | ✓ |
| I2568300300 | 112,14 | 300 | 350 | ✓ |

Raccordo mono (F) - doppia (F) (raccordo caldaia)

gsv 01



| CODICE | € pz. | Øi | Øe | |
|--------------|--------|-----|-----|---|
| I2568080080F | 51,05 | 80 | 130 | ✓ |
| I2568100100F | 56,13 | 100 | 150 | ✓ |
| I2568130130F | 65,36 | 130 | 180 | ✓ |
| I2568150150F | 74,40 | 150 | 200 | ✓ |
| I2568180180F | 82,72 | 180 | 230 | ✓ |
| I2568200200F | 89,65 | 200 | 250 | ✓ |
| I2568250250F | 103,88 | 250 | 300 | ✓ |
| I2568300300F | 123,34 | 300 | 350 | ✓ |

DOPPIAPARETE INOX ISO 25 AISI 316L

Adattatore doppia (M) monoparete (F)

gsv 01



| CODICE | € pz. | Øi | Øe | |
|----------|--------|-----|-----|---|
| I2578080 | 45,41 | 80 | 130 | ✓ |
| I2578100 | 49,90 | 100 | 150 | ✓ |
| I2578130 | 58,20 | 130 | 180 | ✓ |
| I2578150 | 66,22 | 150 | 200 | ✓ |
| I2578180 | 73,58 | 180 | 230 | ✓ |
| I2578200 | 79,75 | 200 | 250 | ✓ |
| I2578250 | 92,44 | 250 | 300 | ✓ |
| I2578300 | 109,74 | 300 | 350 | ✓ |

Bicchieri di montaggio

gsv 01



| CODICE | € pz. | Øe | |
|---------|-------|-----|---|
| M455130 | 18,08 | 130 | ✓ |
| M455150 | 20,43 | 150 | ✓ |
| M455180 | 22,84 | 180 | ✓ |
| M455200 | 24,58 | 200 | ✓ |
| M555230 | 28,37 | 230 | ✓ |
| M555250 | 28,37 | 250 | ✓ |
| M555300 | 32,12 | 300 | ✓ |
| M555350 | 38,54 | 350 | ✓ |

Piastra intermedia supporto a muro

gsv 01



| CODICE | € pz. | Øi | Øe | |
|-----------|--------|-----|-----|---|
| I25820801 | 117,22 | 80 | 130 | ✓ |
| I25821001 | 120,47 | 100 | 150 | ✓ |
| I25821301 | 141,67 | 130 | 180 | ✓ |
| I25821501 | 152,05 | 150 | 200 | ✓ |
| I25821801 | 172,46 | 180 | 230 | ✓ |
| I25822001 | 188,24 | 200 | 250 | ✓ |
| I25822501 | 228,80 | 250 | 300 | ✓ |
| I25823001 | 270,21 | 300 | 350 | ✓ |

Piastra intermedia mono - doppia

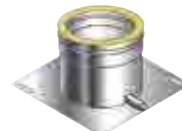
gsv 01



| CODICE | € pz. | Øi | Øe | |
|-----------|--------|-----|-----|---|
| I25820805 | 139,21 | 80 | 130 | ✓ |
| I25821005 | 141,71 | 100 | 150 | ✓ |
| I25821305 | 143,41 | 130 | 180 | ✓ |
| I25821505 | 164,52 | 150 | 200 | ✓ |
| I25821805 | 205,87 | 180 | 230 | ✓ |
| I25822005 | 230,32 | 200 | 250 | ✓ |
| I25822505 | 299,48 | 250 | 300 | ✓ |
| I25823005 | 349,25 | 300 | 350 | ✓ |

Piastra ancoraggio con drenaggio laterale

gsv 01



| CODICE | € pz. | Øi | Øe | |
|----------|--------|-----|-----|---|
| I2591080 | 124,25 | 80 | 130 | ✓ |
| I2591100 | 131,73 | 100 | 150 | ✓ |
| I2591130 | 156,36 | 130 | 180 | ✓ |
| I2591150 | 164,80 | 150 | 200 | ✓ |
| I2591180 | 186,53 | 180 | 230 | ✓ |
| I2591200 | 196,46 | 200 | 250 | ✓ |
| I2591250 | 231,80 | 250 | 300 | ✓ |
| I2591300 | 292,16 | 300 | 350 | ✓ |

Coppia spalle supporto a muro

gsv 01



| CODICE | € pz. | Øi | Øe | |
|-----------|--------|-----|-----|---|
| I25820802 | 46,41 | 80 | 130 | ✓ |
| I25821002 | 50,40 | 100 | 150 | ✓ |
| I25821302 | 56,56 | 130 | 180 | ✓ |
| I25821502 | 61,05 | 150 | 200 | ✓ |
| I25821802 | 69,26 | 180 | 230 | ✓ |
| I25822002 | 74,53 | 200 | 250 | ✓ |
| I25822502 | 88,18 | 250 | 300 | ✓ |
| I25823002 | 107,74 | 300 | 350 | ✓ |



AN ISO 25 INOX-INOX

Tappo con maniglia cieco

GSV 01



| CODICE | € pz. | Øi | Øe | |
|----------|--------|-----|-----|---|
| I2525080 | 72,15 | 80 | 130 | ✓ |
| I2525100 | 74,30 | 100 | 150 | ✓ |
| I2525130 | 81,78 | 130 | 180 | ✓ |
| I2525150 | 90,31 | 150 | 200 | ✓ |
| I2525180 | 105,39 | 180 | 230 | ✓ |
| I2525200 | 110,50 | 200 | 250 | ✓ |
| I2525250 | 126,14 | 250 | 300 | ✓ |
| I2525300 | 141,15 | 300 | 350 | ✓ |

Gomito a 90°

GSV 01



| CODICE | € pz. | Øi | Øe | |
|----------|--------|-----|-----|---|
| I2515080 | 100,34 | 80 | 130 | ✓ |
| I2515100 | 106,61 | 100 | 150 | ✓ |
| I2515130 | 123,04 | 130 | 180 | ✓ |
| I2515150 | 141,37 | 150 | 200 | ✓ |
| I2515180 | 166,36 | 180 | 230 | ✓ |
| I2515200 | 182,78 | 200 | 250 | ✓ |
| I2515250 | 224,41 | 250 | 300 | ✓ |
| I2515300 | 273,79 | 300 | 350 | ✓ |

Gomito a 87°

GSV 01



| CODICE | € pz. | Øi | Øe | |
|----------|--------|-----|-----|---|
| I2516080 | 110,38 | 80 | 130 | ✓ |
| I2516100 | 117,26 | 100 | 150 | ✓ |
| I2516130 | 135,36 | 130 | 180 | ✓ |
| I2516150 | 155,51 | 150 | 200 | ✓ |
| I2516180 | 183,00 | 180 | 230 | ✓ |
| I2516200 | 201,06 | 200 | 250 | ✓ |
| I2516250 | 246,84 | 250 | 300 | ✓ |
| I2516300 | 301,17 | 300 | 350 | ✓ |

Gomito a 45°

GSV 01



| CODICE | € pz. | Øi | Øe | |
|----------|--------|-----|-----|---|
| I2517080 | 56,82 | 80 | 130 | ✓ |
| I2517100 | 60,52 | 100 | 150 | ✓ |
| I2517130 | 70,04 | 130 | 180 | ✓ |
| I2517150 | 80,56 | 150 | 200 | ✓ |
| I2517180 | 94,64 | 180 | 230 | ✓ |
| I2517200 | 104,00 | 200 | 250 | ✓ |
| I2517250 | 128,42 | 250 | 300 | ✓ |
| I2517300 | 157,48 | 300 | 350 | ✓ |

Gomito a 42°

GSV 01



| CODICE | € pz. | Øi | Øe | |
|----------|--------|-----|-----|---|
| I2514080 | 62,51 | 80 | 130 | ✓ |
| I2514100 | 66,58 | 100 | 150 | ✓ |
| I2514130 | 77,03 | 130 | 180 | ✓ |
| I2514150 | 88,62 | 150 | 200 | ✓ |
| I2514180 | 104,10 | 180 | 230 | ✓ |
| I2514200 | 114,40 | 200 | 250 | ✓ |
| I2514250 | 141,27 | 250 | 300 | ✓ |
| I2514300 | 173,23 | 300 | 350 | ✓ |

Gomito a 30°

GSV 01



| CODICE | € pz. | Øi | Øe | |
|----------|--------|-----|-----|---|
| I2519080 | 56,82 | 80 | 130 | ✓ |
| I2519100 | 60,52 | 100 | 150 | ✓ |
| I2519130 | 70,04 | 130 | 180 | ✓ |
| I2519150 | 80,56 | 150 | 200 | ✓ |
| I2519180 | 94,64 | 180 | 230 | ✓ |
| I2519200 | 104,00 | 200 | 250 | ✓ |
| I2519250 | 128,42 | 250 | 300 | ✓ |
| I2519300 | 157,48 | 300 | 350 | ✓ |

Gomito a 15°

GSV 01



Gomito a 90° con tappo ispezione T 200°

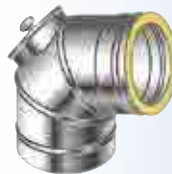
GSV 01



TENUTA P1

Gomito a 90° con tappo ispezione T 600°

GSV 01



TENUTA N1

Terminale controventato

GSV 01



Terminale parapoggia

GSV 01



Cono terminale

GSV 01



DOPPIAPARETE INOX ISO 25 AISI 316L

| CODICE | € pz. | Øi | Øe | |
|----------|--------|-----|-----|---|
| I2518080 | 56,82 | 80 | 130 | ✓ |
| I2518100 | 60,52 | 100 | 150 | ✓ |
| I2518130 | 70,04 | 130 | 180 | ✓ |
| I2518150 | 80,56 | 150 | 200 | ✓ |
| I2518180 | 94,64 | 180 | 230 | ✓ |
| I2518200 | 104,00 | 200 | 250 | ✓ |
| I2518250 | 128,42 | 250 | 300 | ✓ |
| I2518300 | 157,48 | 300 | 350 | ✓ |

| CODICE | € pz. | Øi | Øe | |
|-----------|--------|-----|-----|---|
| I25150801 | 274,39 | 80 | 130 | ✓ |
| I25151001 | 308,87 | 100 | 150 | ✓ |
| I25151301 | 357,99 | 130 | 180 | ✓ |
| I25151501 | 405,86 | 150 | 200 | ✓ |
| I25151801 | 436,04 | 180 | 230 | ✓ |
| I25152001 | 465,52 | 200 | 250 | ✓ |
| I25152501 | 562,61 | 250 | 300 | ✓ |
| I25153001 | 630,13 | 300 | 350 | ✓ |

| CODICE | € pz. | Øi | Øe | |
|-----------|--------|-----|-----|---|
| I25150802 | 310,05 | 80 | 130 | ✓ |
| I25151002 | 349,01 | 100 | 150 | ✓ |
| I25151302 | 404,52 | 130 | 180 | ✓ |
| I25151502 | 458,60 | 150 | 200 | ✓ |
| I25151802 | 492,73 | 180 | 230 | ✓ |
| I25152002 | 526,03 | 200 | 250 | ✓ |
| I25152502 | 635,75 | 250 | 300 | ✓ |
| I25153002 | 712,06 | 300 | 350 | ✓ |

| CODICE | € pz. | Øi | Øe | |
|----------|--------|-----|-----|---|
| I2536080 | 101,29 | 80 | 130 | ✓ |
| I2536100 | 114,90 | 100 | 150 | ✓ |
| I2536130 | 134,13 | 130 | 180 | ✓ |
| I2536150 | 162,16 | 150 | 200 | ✓ |
| I2536180 | 185,99 | 180 | 230 | ✓ |
| I2536200 | 206,84 | 200 | 250 | ✓ |
| I2536250 | 226,44 | 250 | 300 | ✓ |
| I2536300 | 247,40 | 300 | 350 | ✓ |

| CODICE | € pz. | Øi | Øe | |
|----------|--------|-----|-----|---|
| I2537080 | 72,77 | 80 | 130 | ✓ |
| I2537100 | 78,33 | 100 | 150 | ✓ |
| I2537130 | 96,58 | 130 | 180 | ✓ |
| I2537150 | 107,15 | 150 | 200 | ✓ |
| I2537180 | 124,69 | 180 | 230 | ✓ |
| I2537200 | 134,54 | 200 | 250 | ✓ |
| I2537250 | 144,11 | 250 | 300 | ✓ |
| I2537300 | 187,85 | 300 | 350 | ✓ |

| CODICE | € pz. | Øi | Øe | |
|----------|--------|-----|-----|---|
| I2538080 | 56,93 | 80 | 130 | ✓ |
| I2538100 | 67,32 | 100 | 150 | ✓ |
| I2538130 | 74,03 | 130 | 180 | ✓ |
| I2538150 | 94,54 | 150 | 200 | ✓ |
| I2538180 | 100,11 | 180 | 230 | ✓ |
| I2538200 | 113,14 | 200 | 250 | ✓ |
| I2538250 | 133,86 | 250 | 300 | ✓ |
| I2538300 | 146,87 | 300 | 350 | ✓ |



AN ISO 25 INOX-INOX

Terminale biconico

GSV 01



| CODICE | € pz. | Øi | Øe | |
|----------|-------------|-----|-----|--|
| I2539080 | a richiesta | 80 | 130 | |
| I2539100 | a richiesta | 100 | 150 | |
| I2539130 | a richiesta | 130 | 180 | |
| I2539150 | a richiesta | 150 | 200 | |
| I2539180 | a richiesta | 180 | 230 | |
| I2539200 | a richiesta | 200 | 250 | |
| I2539250 | a richiesta | 250 | 300 | |
| I2539300 | a richiesta | 300 | 350 | |

Terminale eolico

GSV 01



| CODICE | € pz. | Øi | Øe | |
|----------|--------|-----|-----|--|
| S450080A | 219,00 | 80 | 130 | |
| S450100A | 198,79 | 100 | 150 | |
| S450130A | 219,54 | 130 | 180 | |
| S450150A | 225,47 | 150 | 200 | |
| S450180A | 248,12 | 180 | 230 | |
| S450200A | 257,32 | 200 | 250 | |
| S450250A | 294,88 | 250 | 300 | |
| S450300A | 347,55 | 300 | 350 | |

Terminale orizzontale con rete antintrusione L 200 mm

GSV 01



TAGLIO A 45°

| CODICE | € pz. | Øi | Øe | |
|----------|--------|-----|-----|--|
| I2548080 | 46,41 | 80 | 130 | |
| I2548100 | 51,03 | 100 | 150 | |
| I2548130 | 59,42 | 130 | 180 | |
| I2548150 | 67,64 | 150 | 200 | |
| I2548180 | 75,20 | 180 | 230 | |
| I2548200 | 81,50 | 200 | 250 | |
| I2548250 | 94,44 | 250 | 300 | |
| I2548300 | 112,14 | 300 | 350 | |

Terminale orizzontale con rete antintrusione L 500 mm

GSV 01

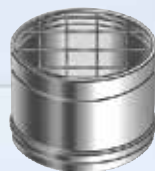


TAGLIO A 45°

| CODICE | € pz. | Øi | Øe | |
|-----------|-------------|-----|-----|--|
| I2548080A | 46,41 | 80 | 130 | |
| I2548100A | 51,03 | 100 | 150 | |
| I2548130A | 59,42 | 130 | 180 | |
| I2548150A | 67,64 | 150 | 200 | |
| I2548180A | 75,20 | 180 | 230 | |
| I2548200A | 81,50 | 200 | 250 | |
| I2548250A | a richiesta | 250 | 300 | |
| I2548300A | a richiesta | 300 | 350 | |

Griglia per aria di compensazione

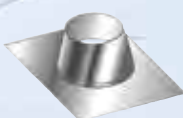
GSV 01



| CODICE | € pz. | Øi | Øe | |
|----------|-------------|-----|-----|--|
| I2588080 | a richiesta | 80 | 130 | |
| I2588100 | a richiesta | 100 | 150 | |
| I2588130 | a richiesta | 130 | 180 | |
| I2588150 | a richiesta | 150 | 200 | |
| I2588180 | a richiesta | 180 | 230 | |
| I2588200 | a richiesta | 200 | 250 | |
| I2588250 | a richiesta | 250 | 300 | |
| I2588300 | a richiesta | 300 | 350 | |

Faldale regolabile 5°/30° con base in alluminio

GSV 04



| CODICE | € pz. | Dim. mm | Øe | |
|---------|--------|----------|-----|---|
| M051130 | 81,07 | 850X550 | 130 | ✓ |
| M051150 | 89,22 | 850X550 | 150 | ✓ |
| M051180 | 109,44 | 1000X650 | 180 | ✓ |
| M051200 | 109,44 | 1000X650 | 200 | ✓ |
| M051230 | 125,76 | 1000X650 | 230 | ✓ |
| M051250 | 141,96 | 1000X650 | 250 | ✓ |
| M051300 | 141,96 | 1000X750 | 300 | ✓ |
| M051350 | 156,07 | 1000X750 | 350 | ✓ |

DOPPIAPARETE INOX ISO 25 AISI 316L

Faldale piatto con base in alluminio

GSV 04



| CODICE | € pz. | Dim. mm | Øe | |
|---------|--------|---------|-----|---|
| M053130 | 81,07 | 550X650 | 130 | ✓ |
| M053150 | 89,22 | 550X650 | 150 | ✓ |
| M053180 | 109,44 | 650X750 | 180 | ✓ |
| M053200 | 109,44 | 650X750 | 200 | ✓ |
| M053230 | 125,76 | 650X750 | 230 | ✓ |
| M053250 | 141,96 | 650X750 | 250 | ✓ |
| M053300 | 141,96 | 750X850 | 300 | ✓ |
| M053350 | 156,07 | 750X750 | 350 | ✓ |

Faldale regolabile 5°/30° con base in piombo

GSV 04



| CODICE | € pz. | Dim. mm | Øe | |
|----------|--------|---------|-----|---|
| M051130P | 117,59 | 600X600 | 130 | ✓ |
| M051150P | 176,49 | 600X600 | 150 | ✓ |
| M051180P | 189,05 | 800X800 | 180 | ✓ |
| M051200P | 189,05 | 800X800 | 200 | ✓ |
| M051230P | 196,72 | 800X800 | 230 | ✓ |
| M051250P | 196,72 | 800X800 | 250 | ✓ |
| M051300P | 218,20 | 800X800 | 300 | ✓ |
| M051350P | 236,13 | 800X800 | 350 | ✓ |

Faldale regolabile 5°/30° inox con base in alluminio estensibile plissettato

GSV 04



| CODICE | € pz. | Dim. mm | Øe | |
|-----------|--------|---------|-----|--|
| M051130PL | 179,19 | 900X600 | 100 | |
| M051150PL | 179,19 | 900X600 | 150 | |
| M051180PL | 179,19 | 900X900 | 180 | |
| M051200PL | 179,19 | 900X900 | 200 | |
| M051250PL | 194,55 | 900X900 | 250 | |
| M051300PL | 194,55 | 900X900 | 300 | |
| M051350PL | 204,79 | 900X900 | 350 | |

Faldale regolabile 5°/30° inox con base in piombo maggiorata

GSV 04



| CODICE | € pz. | Dim. mm | Øe | |
|-----------|--------|-----------|-----|---|
| M051130PM | 193,56 | 1000X700 | 100 | ✓ |
| M051150PM | 193,56 | 1000X700 | 120 | ✓ |
| M051180PM | 209,36 | 1000X700 | 150 | ✓ |
| M051200PM | 209,36 | 1000X800 | 180 | ✓ |
| M051230PM | 240,95 | 1000X800 | 200 | ✓ |
| M051250PM | 240,95 | 1000X800 | 250 | ✓ |
| M051300PM | 280,46 | 1100X1000 | 300 | ✓ |
| M051350PM | 375,26 | 1100X1000 | 350 | ✓ |

Scossalina standard

GSV 04



| CODICE | € pz. | Øe | |
|---------|-------|-----|---|
| M056130 | 26,89 | 130 | ✓ |
| M056150 | 30,23 | 150 | ✓ |
| M056180 | 39,67 | 180 | ✓ |
| M056200 | 43,01 | 200 | ✓ |
| M056230 | 46,27 | 230 | ✓ |
| M056250 | 49,69 | 250 | ✓ |
| M056300 | 56,71 | 300 | ✓ |
| M056350 | 81,68 | 350 | ✓ |

Scossalina semipiana

GSV 04

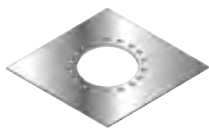


| CODICE | € pz. | Øe | |
|----------|-------|-----|--|
| M056130B | 26,90 | 130 | |
| M056150B | 30,23 | 150 | |
| M056180B | 39,65 | 180 | |
| M056200B | 43,01 | 200 | |
| M056250B | 46,27 | 250 | |
| M056300B | 49,69 | 300 | |
| M056350B | 56,71 | 350 | |

AN ISO 25 INOX-INOX

Piastra a soffitto ventilata

GSV 04



| CODICE | € pz. | Øe | |
|----------|-------------|-----|--|
| PQS080EF | a richiesta | 130 | |
| PQS100EF | a richiesta | 150 | |
| PQS130EF | a richiesta | 180 | |
| PQS150EF | a richiesta | 200 | |
| PQS180EF | a richiesta | 230 | |
| PQS200EF | a richiesta | 250 | |
| PQS250EF | a richiesta | 300 | |
| PQS300EF | a richiesta | 350 | |

Piastra tagliafuoco

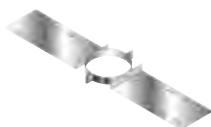
GSV 04



| CODICE | € pz. | Øe | |
|--------|-------------|-----|--|
| PT130 | a richiesta | 130 | |
| PT150 | a richiesta | 150 | |
| PT180 | a richiesta | 180 | |
| PT200 | a richiesta | 200 | |
| PT230 | a richiesta | 230 | |
| PT250 | a richiesta | 250 | |
| PT300 | a richiesta | 300 | |
| PT350 | a richiesta | 350 | |

Supporto a tetto

GSV 04



| CODICE | € pz. | Øi | Øe | |
|--------|-------|-----|-----|--|
| SAT080 | 45,63 | 80 | 130 | |
| SAT100 | 45,63 | 100 | 150 | |
| SAT125 | 45,63 | 125 | 175 | |
| SAT130 | 45,63 | 130 | 180 | |
| SAT140 | 45,63 | 140 | 190 | |
| SAT150 | 45,63 | 150 | 200 | |
| SAT160 | 45,63 | 160 | 210 | |
| SAT180 | 45,63 | 180 | 230 | |
| SAT200 | 48,83 | 200 | 250 | |
| SAT220 | 49,83 | 220 | 270 | |
| SAT230 | 49,83 | 230 | 280 | |
| SAT250 | 50,94 | 250 | 300 | |
| SAT300 | 53,07 | 300 | 350 | |
| SAT350 | 58,37 | 350 | 400 | |

Supporto a tetto rinforzato

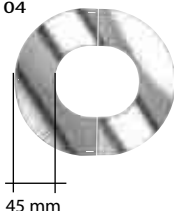
GSV 04



| CODICE | € pz. | Øi | Øe | |
|---------|-------------|-----|-----|--|
| SATR080 | a richiesta | 80 | 130 | |
| SATR100 | a richiesta | 100 | 150 | |
| SATR125 | a richiesta | 125 | 175 | |
| SATR130 | a richiesta | 130 | 180 | |
| SATR140 | a richiesta | 140 | 190 | |
| SATR150 | a richiesta | 150 | 200 | |
| SATR160 | a richiesta | 160 | 210 | |
| SATR180 | a richiesta | 180 | 230 | |
| SATR200 | a richiesta | 200 | 250 | |
| SATR220 | a richiesta | 220 | 270 | |
| SATR230 | a richiesta | 230 | 280 | |
| SATR250 | a richiesta | 250 | 300 | |
| SATR300 | a richiesta | 300 | 350 | |
| SATR350 | a richiesta | 350 | 400 | |

Rosone copimuro inox AISI 304 BA (in 2 pezzi) piatto

GSV 04

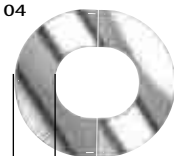


45 mm

| CODICE | € pz. | Ø | |
|---------|-------|-----|---|
| M057130 | 48,27 | 130 | |
| M057150 | 49,07 | 150 | ✓ |
| M057180 | 50,34 | 180 | ✓ |
| M057200 | 51,25 | 200 | ✓ |
| M057230 | 52,69 | 230 | ✓ |
| M057250 | 53,71 | 250 | ✓ |
| M057300 | 56,45 | 300 | |
| M057350 | 59,46 | 350 | |

Rosone copimuro inox AISI 304 BA (in 2 pezzi) inclinato

GSV 04



45 mm

| CODICE | € pz. | Ø | |
|---------|-------|-----|---|
| M058130 | 49,02 | 130 | |
| M058150 | 49,86 | 150 | ✓ |
| M058180 | 51,22 | 180 | ✓ |
| M058200 | 52,16 | 200 | ✓ |
| M058230 | 53,68 | 230 | ✓ |
| M058250 | 54,74 | 250 | ✓ |
| M058300 | 57,59 | 300 | |
| M058350 | 60,72 | 350 | |

DOPPIAPARETE INOX ISO 25 AISI 316L

Fascetta di chiusura / bloccaggio elementi

GSV 01



H = 30 mm

| CODICE | € pz. | Øe | |
|---------|-------|-----|---|
| M083130 | 7,34 | 130 | ✓ |
| M083150 | 7,44 | 150 | ✓ |
| M083180 | 7,73 | 180 | ✓ |
| M083200 | 7,93 | 200 | ✓ |
| M083230 | 8,30 | 230 | ✓ |
| M083250 | 8,49 | 250 | ✓ |
| M083300 | 9,06 | 300 | ✓ |
| M083350 | 9,25 | 350 | ✓ |

Guarnizione per condensazione

GSV 04



PEZZO DI RICAMBIO

| CODICE | € pz. | Øi | |
|---------|-------|-----|---|
| M052080 | 0,91 | 80 | ✓ |
| M052100 | 1,67 | 100 | ✓ |
| M052130 | 2,29 | 130 | ✓ |
| M052150 | 3,00 | 150 | ✓ |
| M052180 | 4,05 | 180 | ✓ |
| M052200 | 5,24 | 200 | ✓ |
| M052250 | 7,44 | 250 | ✓ |
| M052300 | 9,53 | 300 | ✓ |

Guarnizione per condensazione azzurra

GSV 04



TENUTA H1 5000 Pa

| CODICE | € pz. | Øi | |
|-----------|-------|-----|---|
| M052080H1 | 0,96 | 80 | ✓ |
| M052100H1 | 1,75 | 100 | ✓ |
| M052130H1 | 2,41 | 130 | ✓ |
| M052150H1 | 3,16 | 150 | ✓ |
| M052180H1 | 4,25 | 180 | ✓ |
| M052200H1 | 5,50 | 200 | ✓ |
| M052250H1 | 7,81 | 250 | ✓ |
| M052300H1 | 10,01 | 300 | ✓ |

Fascetta / collare a muro regolabile 50 - 80 mm

GSV 04



H = 40 mm

| CODICE | € pz. | Øe | |
|---------|-------|-----|---|
| M094130 | 16,83 | 130 | ✓ |
| M094150 | 21,64 | 150 | ✓ |
| M094180 | 24,68 | 180 | ✓ |
| M094200 | 26,58 | 200 | ✓ |
| M094230 | 30,04 | 230 | ✓ |
| M094250 | 30,25 | 250 | ✓ |
| M094300 | 34,02 | 300 | ✓ |
| M094350 | 37,29 | 350 | ✓ |

Coppia prolunghe per fascetta a muro

GSV 04



H = 40 mm

| CODICE | € COPPIA | LUNGH. | |
|----------|----------|--------|---|
| M0930001 | 40,87 | 230 mm | ✓ |
| M0930002 | 50,88 | 480 mm | ✓ |

Distanziale regolabile per collare a muro

GSV 04



| | | | |
|----------|-------|--------|---|
| M0930003 | 50,41 | 660 mm | ✓ |
|----------|-------|--------|---|

Fascetta per cavi tiranti

GSV 04



H = 30 mm

| CODICE | € pz. | Øe | |
|---------|-------|-----|---|
| M090130 | 26,80 | 130 | ✓ |
| M090150 | 28,75 | 150 | ✓ |
| M090180 | 30,66 | 180 | ✓ |
| M090200 | 31,09 | 200 | ✓ |
| M090230 | 31,37 | 230 | ✓ |
| M090250 | 31,66 | 250 | ✓ |
| M090300 | 32,52 | 300 | ✓ |
| M090350 | 37,29 | 350 | ✓ |

Kit fissaggio 4 tasselli dn 12 bullone m8x60 inox/inox

GSV 18



| CODICE | € pz. | |
|---------|-------|---|
| S401001 | 3,66 | ✓ |

AN ISO 25 INOX-INOX

Attraversamento a tetto H = 650 mm



| CODICE | € pz. | ØP | Øest-F | Øi | Øe | |
|----------|--------|-----|--------|-----|-----|---|
| I2596080 | 422,55 | 150 | 300 | 80 | 130 | ✓ |
| I2596100 | 478,77 | 170 | 300 | 100 | 150 | ✓ |
| I2596130 | 567,04 | 200 | 350 | 130 | 180 | ✓ |
| I2596150 | 604,37 | 220 | 350 | 150 | 200 | ✓ |
| I2596180 | 689,88 | 250 | 400 | 180 | 230 | ✓ |
| I2596200 | 727,31 | 270 | 400 | 200 | 250 | ✓ |
| I2596250 | 838,61 | 320 | 450 | 250 | 300 | ✓ |
| I2596300 | 995,03 | 370 | 500 | 300 | 350 | ✓ |

Attraversamento a tetto H = 1000 mm



| CODICE | € pz. | ØP | Øest-F | Øi | Øe | |
|-----------|----------|-----|--------|-----|-----|---|
| I2596080A | 703,37 | 150 | 300 | 80 | 130 | ✓ |
| I2596100A | 792,79 | 170 | 300 | 100 | 150 | ✓ |
| I2596130A | 947,77 | 200 | 350 | 130 | 180 | ✓ |
| I2596150A | 1.019,31 | 220 | 350 | 150 | 200 | ✓ |
| I2596180A | 1.168,31 | 250 | 400 | 180 | 230 | ✓ |
| I2596200A | 1.221,97 | 270 | 400 | 200 | 250 | ✓ |
| I2596250A | 1.555,77 | 320 | 450 | 250 | 300 | ✓ |
| I2596300A | 1.841,90 | 370 | 500 | 300 | 350 | ✓ |

Attraversamento a tetto G00S H mm = tot. 700 - utile 500



| CODICE | € pz. | Øest-F | Øi | Øe | |
|-----------|--------|--------|-----|-----|---|
| I2596080S | 301,78 | 300 | 80 | 130 | ✓ |
| I2596100S | 321,79 | 300 | 100 | 150 | ✓ |
| I2596130S | 353,46 | 350 | 130 | 180 | ✓ |
| I2596150S | 372,37 | 350 | 150 | 200 | ✓ |
| I2596180S | 402,40 | 400 | 180 | 230 | ✓ |
| I2596200S | 423,65 | 400 | 200 | 250 | ✓ |
| I2596250S | 500,65 | 450 | 250 | 300 | ✓ |
| I2596300S | 584,49 | 500 | 300 | 350 | ✓ |

Attraversamento a tetto G00S nero H mm = tot. 700 - utile 500



| CODICE | € pz. | Øest-F | Øi | Øe | |
|------------|--------|--------|-----|-----|---|
| I2596080SN | 422,49 | 300 | 80 | 130 | ✓ |
| I2596100SN | 450,51 | 300 | 100 | 150 | ✓ |
| I2596130SN | 494,85 | 350 | 130 | 180 | ✓ |
| I2596150SN | 521,31 | 350 | 150 | 200 | ✓ |
| I2596180SN | 563,37 | 400 | 180 | 230 | ✓ |
| I2596200SN | 593,11 | 400 | 200 | 250 | ✓ |
| I2596250SN | 700,91 | 450 | 250 | 300 | ✓ |
| I2596300SN | 818,29 | 500 | 300 | 350 | ✓ |

Attraversamento a tetto G00S H mm = tot. 1000 - utile 800



| CODICE | € pz. | Øest-F | Øi | Øe | |
|------------|--------|--------|-----|-----|---|
| I2596080AS | 524,41 | 300 | 80 | 130 | ✓ |
| I2596100AS | 561,52 | 300 | 100 | 150 | ✓ |
| I2596130AS | 600,89 | 350 | 130 | 180 | ✓ |
| I2596150AS | 633,02 | 350 | 150 | 200 | ✓ |
| I2596180AS | 684,09 | 400 | 180 | 230 | ✓ |
| I2596200AS | 720,22 | 400 | 200 | 250 | ✓ |
| I2596250AS | 851,10 | 450 | 250 | 300 | ✓ |
| I2596300AS | 993,63 | 500 | 300 | 350 | ✓ |

Attraversamento a tetto G00S nero H mm = tot. 1000 - utile 800



| CODICE | € pz. | Øest-F | Øi | Øe | |
|-------------|----------|--------|-----|-----|---|
| I2596080ASN | 734,18 | 300 | 80 | 130 | ✓ |
| I2596100ASN | 786,14 | 300 | 100 | 150 | ✓ |
| I2596130ASN | 841,25 | 350 | 130 | 180 | ✓ |
| I2596150ASN | 886,23 | 350 | 150 | 200 | ✓ |
| I2596180ASN | 957,73 | 400 | 180 | 230 | ✓ |
| I2596200ASN | 1.008,30 | 400 | 200 | 250 | ✓ |
| I2596250ASN | 1.191,54 | 450 | 250 | 300 | ✓ |
| I2596300ASN | 1.391,08 | 500 | 300 | 350 | ✓ |

DOPPIAPARETE INOX ISO 25 AISI 316L

Elemento coibentato inox per attacco Fe H = 500 - Legna

gsv 01



TELESCOPICO

| CODICE | € pz. | Øi | Øe | |
|-----------|--------|-----|-----|---|
| I2509130F | 207,42 | 130 | 180 | ✓ |
| I2509150F | 236,09 | 150 | 200 | ✓ |
| I2509180F | 262,51 | 180 | 230 | ✓ |
| I2509200F | 284,50 | 200 | 250 | ✓ |
| I2509250F | 329,65 | 250 | 300 | ✓ |
| I2509300F | 391,42 | 300 | 350 | ✓ |

Elemento coibentato inox per attacco Fe nero H = 500 - Legna

gsv 01



TELESCOPICO

| CODICE | € pz. | Øi | Øe | |
|------------|--------|-----|-----|---|
| I2509130FN | 290,39 | 130 | 180 | ✓ |
| I2509150FN | 330,53 | 150 | 200 | ✓ |
| I2509180FN | 367,51 | 180 | 230 | ✓ |
| I2509200FN | 398,30 | 200 | 250 | ✓ |
| I2509250FN | 461,50 | 250 | 300 | ✓ |
| I2509300FN | 547,98 | 300 | 350 | ✓ |

Adattatore mono - doppia nero H = 500 - Pellet

gsv 01



TELESCOPICO

| CODICE | € pz. | Øi | Øe | |
|------------|--------|-----|-----|---|
| I2568080NF | 187,11 | 80 | 130 | ✓ |
| I2568100NF | 197,51 | 100 | 150 | ✓ |

Raccordo universale monoparete - doppia parete

gsv 01



DA UTILIZZARE CON LINEA FIRE FE

| CODICE | € pz. | Øi | Øe | |
|-----------|-------|-----|-----|---|
| I2568130I | 73,47 | 130 | 180 | ✓ |
| I2568150I | 75,78 | 150 | 200 | ✓ |
| I2568180I | 81,21 | 180 | 230 | ✓ |
| I2568200I | 85,05 | 200 | 250 | ✓ |

Scossalina per attraversamento a tetto maggiorata

gsv 04



| CODICE | € pz. | Øe | |
|----------|--------|-----|---|
| M056130T | 107,81 | 130 | ✓ |
| M056150T | 113,26 | 150 | ✓ |
| M056180T | 133,18 | 180 | ✓ |
| M056200T | 153,65 | 200 | ✓ |
| M056230T | 176,21 | 230 | ✓ |
| M056250T | 202,67 | 250 | ✓ |
| M056300T | 232,90 | 300 | ✓ |
| M056350T | 268,52 | 350 | ✓ |

Faldale regolabile 5°/30° con base in alluminio

gsv 04



| CODICE | € pz. | Dim. mm | Øe | |
|---------|--------|-----------|-----|---|
| M051300 | 141,96 | 1000X750 | 300 | ✓ |
| M051350 | 156,07 | 1000X750 | 350 | ✓ |
| M051400 | 181,64 | 1000X1000 | 400 | ✓ |
| M051450 | 214,83 | 1000X1000 | 450 | ✓ |
| M051500 | 243,54 | 1000X1000 | 500 | ✓ |

AN ISO 25 INOX-INOX

Faldale regolabile
5°/30° con base in
piombo maggiorata

gsv 04



| CODICE | € pz. | Dim. mm | Øe | |
|-----------|--------------------|-----------|-----|---|
| M051300PM | 280,46 | 1100X1000 | 300 | ✓ |
| M051350PM | 375,26 | 1100X1000 | 350 | ✓ |
| M051400PM | 395,01 | | 400 | ✓ |
| M051450PM | 454,26 | | 450 | |
| M051500PM | a richiesta | | 500 | |

Faldale piatto con base
in alluminio

gsv 04



| CODICE | € pz. | Dim. mm | Øe | |
|---------|---------------|-----------|-----|---|
| M053300 | 141,96 | 750X750 | 300 | ✓ |
| M053350 | 156,07 | 750X750 | 350 | ✓ |
| M053400 | 181,64 | 1000X1000 | 400 | ✓ |
| M053450 | 214,83 | 1000X1000 | 450 | ✓ |
| M053500 | 243,54 | 1000X1000 | 500 | ✓ |

Piastra
tagliafuoco

gsv 04



| CODICE | € pz. | Øe | |
|--------|--------------------|-----|--|
| PT130 | a richiesta | 130 | |
| PT150 | a richiesta | 150 | |
| PT180 | a richiesta | 180 | |
| PT200 | a richiesta | 200 | |
| PT250 | a richiesta | 250 | |
| PT300 | a richiesta | 300 | |
| PT350 | a richiesta | 350 | |

Collare di supporto
per attraversamento
a tetto

gsv 04



Rosone copimuro
inox AISI 304 BA
(in 2 pezzi) piatto

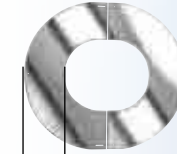
gsv 04



45 mm

Rosone copimuro
inox AISI 304 BA
(in 2 pezzi) inclinato

gsv 04



45 mm

DOPPIAPARETE INOX ISO 25 AISI 316L

| CODICE | € pz. | Øe | |
|----------|---------------|-----|--|
| M094130S | 50,09 | 130 | |
| M094150S | 55,76 | 150 | |
| M094180S | 63,32 | 180 | |
| M094200S | 68,99 | 200 | |
| M094230S | 80,33 | 230 | |
| M094250S | 86,00 | 250 | |
| M094300S | 98,28 | 300 | |
| M094350S | 111,51 | 350 | |

| CODICE | € pz. | Q.tà | Ø | |
|---------|--------------------|------|-----|--|
| M057300 | 56,45 | | 300 | |
| M057350 | 59,46 | | 350 | |
| M057400 | 62,75 | | 400 | |
| M057450 | 66,32 | | 450 | |
| M057500 | 70,16 | | 500 | |
| M057550 | a richiesta | | 550 | |
| M057600 | a richiesta | | 600 | |
| M057650 | a richiesta | | 650 | |
| M057700 | a richiesta | | 700 | |
| M057750 | a richiesta | | 750 | |
| M057800 | a richiesta | | 800 | |

| CODICE | € pz. | Q.tà | Ø | |
|---------|--------------------|------|-----|--|
| M058300 | 57,59 | | 300 | |
| M058350 | 60,72 | | 350 | |
| M058400 | 64,12 | | 400 | |
| M058450 | 67,81 | | 450 | |
| M058500 | 71,76 | | 500 | |
| M058550 | a richiesta | | 550 | |
| M058600 | a richiesta | | 600 | |
| M058650 | a richiesta | | 650 | |
| M058700 | a richiesta | | 700 | |
| M058750 | a richiesta | | 750 | |
| M058800 | a richiesta | | 800 | |