



# AN TWIN INOX-INOX

## Gomito a 45°

gsv 32



|       | CODICE        | € pz.  | Øi  | Øe  |   |
|-------|---------------|--------|-----|-----|---|
| XOXI  | VII17060100   | 45,83  | 60  | 100 |   |
|       | VII17080125   | 43,52  | 80  | 125 |   |
|       | VII17100150   | 48,92  | 100 | 150 | ✓ |
|       | VII17130200   | 55,37  | 130 | 200 | ✓ |
|       | VII17150200   | 62,42  | 150 | 200 |   |
|       | VII17200250   | 77,33  | 200 | 250 |   |
|       | VIIIN17060100 | 64,16  | 60  | 100 |   |
| OXENI | VIIIN17080125 | 60,93  | 80  | 125 |   |
|       | VIIIN17100150 | 68,49  | 100 | 150 |   |
|       | VIIIN17130200 | 77,52  | 130 | 200 |   |
|       | VIIIN17150200 | 87,39  | 150 | 200 |   |
|       | VIIIN17200250 | 108,26 | 200 | 250 |   |

## Gomito a 30°

gsv 32



|       | CODICE        | € pz.  | Øi  | Øe  |  |
|-------|---------------|--------|-----|-----|--|
| XOXI  | VII19060100   | 45,83  | 60  | 100 |  |
|       | VII19080125   | 43,52  | 80  | 125 |  |
|       | VII19100150   | 48,92  | 100 | 150 |  |
|       | VII19130200   | 55,37  | 130 | 200 |  |
|       | VII19150200   | 62,42  | 150 | 200 |  |
|       | VII19200250   | 77,33  | 200 | 250 |  |
|       | VIIIN19060100 | 64,16  | 60  | 100 |  |
| OXENI | VIIIN19080125 | 60,93  | 80  | 125 |  |
|       | VIIIN19100150 | 68,49  | 100 | 150 |  |
|       | VIIIN19130200 | 77,52  | 130 | 200 |  |
|       | VIIIN19150200 | 87,39  | 150 | 200 |  |
|       | VIIIN19200250 | 108,26 | 200 | 250 |  |

## Piastra intermedia supporto a muro

gsv 32



|       | CODICE         | € pz.  | Øi  | Øe  |  |
|-------|----------------|--------|-----|-----|--|
| XOXI  | VII820601001   | 72,58  | 60  | 100 |  |
|       | VII820801251   | 72,58  | 80  | 125 |  |
|       | VII821001501   | 73,98  | 100 | 150 |  |
|       | VII821302001   | 83,52  | 130 | 200 |  |
|       | VII821502001   | 89,06  | 150 | 200 |  |
|       | VII822002501   | 110,38 | 200 | 250 |  |
|       | VIIIN820601001 | 101,61 | 60  | 100 |  |
| OXENI | VIIIN820801251 | 101,61 | 80  | 125 |  |
|       | VIIIN821001501 | 103,57 | 100 | 150 |  |
|       | VIIIN821302001 | 116,93 | 130 | 200 |  |
|       | VIIIN821502001 | 124,69 | 150 | 200 |  |
|       | VIIIN822002501 | 154,53 | 200 | 250 |  |

## Coppia spalle supporto a muro

gsv 04



|       | CODICE    | € pz. | Øi  | Øe  |   |
|-------|-----------|-------|-----|-----|---|
| XOXI  | M5821002  | 34,22 | 60  | 100 | ✓ |
|       | M5821252  | 36,60 | 80  | 125 | ✓ |
|       | M5821502  | 39,83 | 100 | 150 | ✓ |
|       | M5822002  | 47,39 | 130 | 200 | ✓ |
|       | M5822002  | 47,39 | 150 | 200 | ✓ |
|       | M5822502  | 55,91 | 200 | 250 | ✓ |
|       | MN5821002 | 47,90 | 60  | 100 |   |
| OXENI | MN5821252 | 51,24 | 80  | 125 |   |
|       | MN5821502 | 55,77 | 100 | 150 |   |
|       | MN5822002 | 66,34 | 130 | 200 |   |
|       | MN5822002 | 66,34 | 150 | 200 |   |
|       | MN5822502 | 78,27 | 200 | 250 |   |

## Tappo con drenaggio

gsv 32



|       | CODICE        | € pz.  | Øi  | Øe  |  |
|-------|---------------|--------|-----|-----|--|
| XOXI  | VII29060100   | 63,68  | 60  | 100 |  |
|       | VII29080125   | 60,52  | 80  | 125 |  |
|       | VII29100150   | 64,73  | 100 | 150 |  |
|       | VII29130200   | 71,21  | 130 | 200 |  |
|       | VII29150200   | 76,86  | 150 | 200 |  |
|       | VII29200250   | 86,04  | 200 | 250 |  |
|       | VIIIN29060100 | 89,16  | 60  | 100 |  |
| OXENI | VIIIN29080125 | 84,72  | 80  | 125 |  |
|       | VIIIN29100150 | 90,62  | 100 | 150 |  |
|       | VIIIN29130200 | 99,69  | 130 | 200 |  |
|       | VIIIN29150200 | 107,60 | 150 | 200 |  |
|       | VIIIN29200250 | 120,46 | 200 | 250 |  |

## Tappo cieco

gsv 32



|       | CODICE        | € pz. | Øi  | Øe  |  |
|-------|---------------|-------|-----|-----|--|
| XOXI  | VII25060100   | 47,16 | 60  | 100 |  |
|       | VII25080125   | 44,82 | 80  | 125 |  |
|       | VII25100150   | 48,13 | 100 | 150 |  |
|       | VII25130200   | 53,28 | 130 | 200 |  |
|       | VII25150200   | 57,28 | 150 | 200 |  |
|       | VII25200250   | 69,30 | 200 | 250 |  |
|       | VIIIN25060100 | 66,02 | 60  | 100 |  |
| OXENI | VIIIN25080125 | 62,75 | 80  | 125 |  |
|       | VIIIN25100150 | 67,38 | 100 | 150 |  |
|       | VIIIN25130200 | 74,59 | 130 | 200 |  |
|       | VIIIN25150200 | 80,19 | 150 | 200 |  |
|       | VIIIN25200250 | 97,02 | 200 | 250 |  |

## Terminale anti intemperie con presa d'aria

gsv 32



|       | CODICE        | € pz.  | Øi  | Øe  |   |
|-------|---------------|--------|-----|-----|---|
| XOXI  | VII36060100   | 161,42 | 60  | 100 |   |
|       | VII36080125   | 153,36 | 80  | 125 |   |
|       | VII36100150   | 187,09 | 100 | 150 | ✓ |
|       | VII36130200   | 223,24 | 130 | 200 | ✓ |
|       | VII36150200   | 267,84 | 150 | 200 |   |
|       | VII36200250   | 321,30 | 200 | 250 |   |
|       | VIIIN36060100 | 225,99 | 60  | 100 |   |
| OXENI | VIIIN36080125 | 214,70 | 80  | 125 |   |
|       | VIIIN36100150 | 261,93 | 100 | 150 |   |
|       | VIIIN36130200 | 312,53 | 130 | 200 |   |
|       | VIIIN36150200 | 374,98 | 150 | 200 |   |
|       | VIIIN36200250 | 449,82 | 200 | 250 |   |

## Elemento coassiale con presa d'aria Ø 60 mm ed evacuazione fumi femmina monoparete

gsv 32



|       | CODICE          | € pz.       | Øi  | Øe  |  |
|-------|-----------------|-------------|-----|-----|--|
| XOXI  | VII22060100AB   | a richiesta | 60  | 100 |  |
|       | VII22080125AB   | 150,92      | 80  | 125 |  |
|       | VII22100150AB   | 172,35      | 100 | 150 |  |
|       | VII22130200AB   | a richiesta | 130 | 200 |  |
|       | VII22150200AB   | a richiesta | 150 | 200 |  |
|       | VII22200250AB   | a richiesta | 200 | 250 |  |
|       | VIIIN22060100AB | a richiesta | 60  | 100 |  |
| OXENI | VIIIN22080125AB | 211,28      | 80  | 125 |  |
|       | VIIIN22100150AB | 241,29      | 100 | 150 |  |
|       | VIIIN22130200AB | a richiesta | 130 | 200 |  |
|       | VIIIN22150200AB | a richiesta | 150 | 200 |  |
|       | VIIIN22200250AB | a richiesta | 200 | 250 |  |

## Terminale orizzontale con due rosconi

gsv 32



|       | CODICE        | € pz.           | Øi  | Øe  |  |
|-------|---------------|-----------------|-----|-----|--|
| XOXI  | VII42060100   | non disponibile | 60  | 100 |  |
|       | VII42080125   | 194,04          | 80  | 125 |  |
|       | VII42100150   | 222,44          | 100 | 150 |  |
|       | VII42130200   | 242,77          | 130 | 200 |  |
|       | VII42150250   | 291,31          | 150 | 200 |  |
|       | VII42200250   | a richiesta     | 200 | 250 |  |
|       | VIIIN42060100 | non disponibile | 60  | 100 |  |
| OXENI | VIIIN42080125 | 271,66          | 80  | 125 |  |
|       | VIIIN42100150 | 311,41          | 100 | 150 |  |
|       | VIIIN42130200 | 339,88          | 130 | 200 |  |
|       | VIIIN42150250 | 407,83          | 150 | 200 |  |
|       | VIIIN42200250 | a richiesta     | 200 | 250 |  |

SMONTABILE PER PULIZIA

## Terminale tronco con ventilato

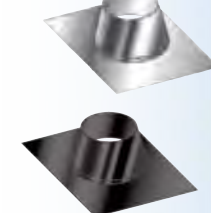
gsv 32



|       | CODICE        | € pz.       | Øi  | Øe  |  |
|-------|---------------|-------------|-----|-----|--|
| XOXI  | VII38060100   | 105,93      | 60  | 100 |  |
|       | VII38080125   | 109,35      | 80  | 125 |  |
|       | VII38100150   | a richiesta | 100 | 150 |  |
|       | VII38130200   | a richiesta | 130 | 200 |  |
|       | VII38150200   | a richiesta | 150 | 200 |  |
|       | VII38200250   | a richiesta | 200 | 250 |  |
|       | VIIIN38060100 | 148,30      | 60  | 100 |  |
| OXENI | VIIIN38080125 | 153,09      | 80  | 125 |  |
|       | VIIIN38100150 | a richiesta | 100 | 150 |  |
|       | VIIIN38130200 | a richiesta | 130 | 200 |  |
|       | VIIIN38150200 | a richiesta | 150 | 200 |  |
|       | VIIIN38200250 | a richiesta | 200 | 250 |  |

## Faldale regolabile 5°/30° con base in alluminio

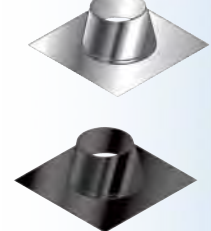
gsv 04



|       | CODICE   | € pz.  | Dim. mm  | Øi  | Øe  |   |
|-------|----------|--------|----------|-----|-----|---|
| XOXI  | M051100  | 66,22  | 750X450  | 60  | 100 | ✓ |
|       | M051125  | 77,21  | 850X550  | 80  | 125 | ✓ |
|       | M051150  | 84,97  | 850X550  | 100 | 150 | ✓ |
|       | M051200  | 104,23 | 1000X650 | 130 | 200 | ✓ |
|       | M051200  | 104,23 | 1000X650 | 150 | 200 | ✓ |
|       | M051250  | 135,20 | 1000X650 | 200 | 250 | ✓ |
|       | MN051100 | 92,71  | 750X450  | 60  | 100 |   |
| OXENI | MN051125 | 108,09 | 850X550  | 80  | 125 |   |
|       | MN051150 | 118,96 | 850X550  | 100 | 150 |   |
|       | MN051200 | 145,92 | 1000X650 | 130 | 200 |   |
|       | MN051200 | 145,92 | 1000X650 | 150 | 200 |   |
|       | MN051250 | 189,28 | 1000X650 | 200 | 250 |   |

## Faldale piatto con base in alluminio

gsv 04

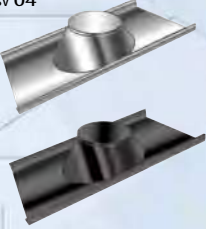


|       | CODICE   | € pz.  | Dim. mm | Øi  | Øe  |   |
|-------|----------|--------|---------|-----|-----|---|
| XOXI  | M053100  | 66,22  | 450X550 | 60  | 100 | ✓ |
|       | M053125  | 77,21  | 550X650 | 80  | 125 | ✓ |
|       | M053150  | 84,97  | 550X650 | 100 | 150 | ✓ |
|       | M053200  | 104,23 | 650X750 | 130 | 200 | ✓ |
|       | M053200  | 104,23 | 650X750 | 150 | 200 | ✓ |
|       | M053250  | 135,20 | 650X750 | 200 | 250 | ✓ |
|       | MN053100 | 92,71  | 450X550 | 60  | 100 |   |
| OXENI | MN053125 | 108,09 | 550X650 | 80  | 125 |   |
|       | MN053150 | 118,96 | 550X650 | 100 | 150 |   |
|       | MN053200 | 145,92 | 650X750 | 130 | 200 |   |
|       | MN053200 | 145,92 | 650X750 | 150 | 200 |   |
|       | MN053250 | 189,28 | 650X750 | 200 | 250 |   |

# AN TWIN INOX-INOX

Faldale regolabile  
5°/30° con base  
in piombo

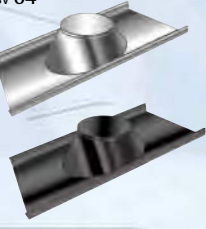
gsv 04



| CODICE    | € pz.  | Dim. mm | Øi  | Øe  |   |
|-----------|--------|---------|-----|-----|---|
| M051100P  | 129,37 | 600X500 | 60  | 100 | ✓ |
| M051130P  | 142,33 | 600X600 | 80  | 125 | ✓ |
| M051150P  | 213,60 | 600X600 | 100 | 150 | ✓ |
| M051200P  | 228,80 | 800X800 | 130 | 200 | ✓ |
| M051200P  | 228,80 | 800X800 | 150 | 200 | ✓ |
| M051250P  | 277,03 | 800X800 | 200 | 250 | ✓ |
| MN051100P | 181,12 | 600X500 | 60  | 100 | ✓ |
| MN051130P | 199,26 | 600X600 | 80  | 125 | ✓ |
| MN051150P | 299,04 | 600X600 | 100 | 150 | ✓ |
| MN051200P | 320,32 | 800X800 | 130 | 200 | ✓ |
| MN051200P | 320,32 | 800X800 | 150 | 200 | ✓ |
| MN051250P | 387,84 | 800X800 | 200 | 250 | ✓ |

Faldale regolabile  
5°/30° inox con base  
in piombo maggiorata

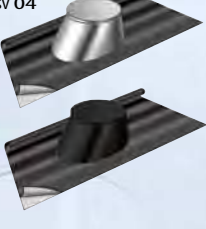
gsv 04



| CODICE     | € pz.  | Dim. mm  | Øi  | Øe  |   |
|------------|--------|----------|-----|-----|---|
| M051100PM  | 222,54 | 1000X700 | 60  | 100 | ✓ |
| M051125PM  | 222,54 | 1000X700 | 80  | 125 | ✓ |
| M051150PM  | 222,54 | 1000X700 | 100 | 150 | ✓ |
| M051200PM  | 240,70 | 1000X700 | 130 | 200 | ✓ |
| M051250PM  | 277,04 | 1000X700 | 200 | 250 | ✓ |
| MN051100PM | 311,55 | 1000X700 | 60  | 100 | ✓ |
| MN051125PM | 311,55 | 1000X700 | 80  | 125 | ✓ |
| MN051150PM | 311,55 | 1000X700 | 100 | 150 | ✓ |
| MN051200PM | 336,98 | 1000X700 | 130 | 200 | ✓ |
| MN051250PM | 387,85 | 1000X700 | 200 | 250 | ✓ |

Faldale regolabile  
5°/30° inox con base in  
alluminio estensibile  
plissettato

gsv 04



| CODICE     | € pz.  | Dim. mm | Øi  | Øe  |   |
|------------|--------|---------|-----|-----|---|
| M051100PL  | 121,90 | 900X600 | 60  | 100 | ✓ |
| M051130PL  | 170,66 | 900X600 | 80  | 125 | ✓ |
| M051150PL  | 170,66 | 900X900 | 100 | 150 | ✓ |
| M051200PL  | 170,66 | 900X900 | 130 | 200 | ✓ |
| M051250PL  | 185,29 | 900X900 | 200 | 250 | ✓ |
| MN051100PL | 170,66 | 900X600 | 60  | 100 | ✓ |
| MN051130PL | 238,92 | 900X600 | 80  | 125 | ✓ |
| MN051150PL | 238,92 | 900X900 | 100 | 150 | ✓ |
| MN051200PL | 238,92 | 900X900 | 130 | 200 | ✓ |
| MN051250PL | 259,40 | 900X900 | 200 | 250 | ✓ |

Scossalina standard

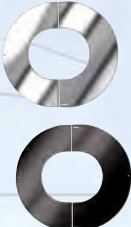
gsv 04



| CODICE   | € pz. | Øi  | Øe  |   |
|----------|-------|-----|-----|---|
| M056100  | 23,39 | 60  | 100 | ✓ |
| M056125  | 25,61 | 80  | 125 | ✓ |
| M056150  | 28,79 | 100 | 150 | ✓ |
| M056200  | 40,96 | 130 | 200 | ✓ |
| M056200  | 40,96 | 150 | 200 | ✓ |
| M056250  | 47,32 | 200 | 250 | ✓ |
| MN056100 | 32,75 | 60  | 100 | ✓ |
| MN056125 | 35,85 | 80  | 125 | ✓ |
| MN056150 | 40,31 | 100 | 150 | ✓ |
| MN056200 | 57,34 | 130 | 200 | ✓ |
| MN056200 | 57,34 | 150 | 200 | ✓ |
| MN056250 | 66,25 | 200 | 250 | ✓ |

Rosone coprimuro  
inox AISI 304 BA  
(in 2 pezzi) piatto

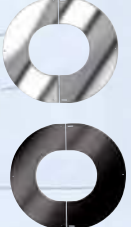
gsv 04



| CODICE   | € pz. | Øi  | Øe  |   |
|----------|-------|-----|-----|---|
| M057100  | 44,91 | 60  | 100 | ✓ |
| M057130  | 45,97 | 80  | 125 | ✓ |
| M057150  | 46,73 | 100 | 150 | ✓ |
| M057200  | 48,81 | 130 | 200 | ✓ |
| M057250  | 51,15 | 200 | 250 | ✓ |
| MN057100 | 62,87 | 60  | 100 | ✓ |
| MN057130 | 64,36 | 80  | 125 | ✓ |
| MN057150 | 65,42 | 100 | 150 | ✓ |
| MN057200 | 68,33 | 130 | 200 | ✓ |
| MN057250 | 71,61 | 200 | 250 | ✓ |

Rosone coprimuro  
inox AISI 304 BA  
(in 2 pezzi) inclinato

gsv 04



| CODICE   | € pz. | Øi  | Øe  |   |
|----------|-------|-----|-----|---|
| M058100  | 45,57 | 60  | 100 | ✓ |
| M058130  | 46,69 | 80  | 125 | ✓ |
| M058150  | 47,49 | 100 | 150 | ✓ |
| M058200  | 49,68 | 130 | 200 | ✓ |
| M058250  | 52,13 | 200 | 250 | ✓ |
| MN058100 | 63,80 | 60  | 100 | ✓ |
| MN058130 | 65,37 | 80  | 125 | ✓ |
| MN058150 | 66,49 | 100 | 150 | ✓ |
| MN058200 | 69,56 | 130 | 200 | ✓ |
| MN058250 | 72,99 | 200 | 250 | ✓ |

GUARNIZIONE SILICONICA INCLUSA

# SISTEMA COASSIALE IN ACCIAIO INOX

Guarnizione per  
condensazione

gsv 04



PEZZO DI RICAMBIO

| CODICE  | € pz. | Øi  | Øe  |   |
|---------|-------|-----|-----|---|
| M052060 | 0,82  | 60  | 100 | ✓ |
| M052080 | 0,87  | 80  | 125 | ✓ |
| M052100 | 1,59  | 100 | 150 | ✓ |
| M052130 | 2,18  | 130 | 200 | ✓ |
| M052150 | 2,86  | 150 | 200 | ✓ |
| M052200 | 4,99  | 200 | 250 | ✓ |

Guarnizione per  
cavedio

gsv 04



TENUTA P1

| CODICE  | € pz. | Øi  | Øe  |   |
|---------|-------|-----|-----|---|
| M052100 | 1,59  | 60  | 100 | ✓ |
| M052125 | 2,18  | 80  | 125 | ✓ |
| M052150 | 2,86  | 100 | 150 | ✓ |
| M052200 | 4,99  | 130 | 200 | ✓ |
| M052200 | 4,99  | 150 | 200 | ✓ |
| M052250 | 7,09  | 200 | 250 | ✓ |

Fascetta di chiusura/  
bloccaggio elementi

gsv 04



H = 20 mm

| CODICE   | € pz. | Øi  | Øe  |   |
|----------|-------|-----|-----|---|
| M030100  | 3,00  | 60  | 100 | ✓ |
| M030125  | 3,14  | 80  | 125 | ✓ |
| M030150  | 3,26  | 100 | 150 | ✓ |
| M030200  | 3,36  | 130 | 200 | ✓ |
| M030200  | 3,36  | 150 | 200 | ✓ |
| M030250  | 3,87  | 200 | 250 | ✓ |
| MN030100 | 4,20  | 60  | 100 | ✓ |
| MN030125 | 4,39  | 80  | 125 | ✓ |
| MN030150 | 4,57  | 100 | 150 | ✓ |
| MN030200 | 4,70  | 130 | 200 | ✓ |
| MN030200 | 4,70  | 150 | 200 | ✓ |
| MN030250 | 5,42  | 200 | 250 | ✓ |

Fascetta/collare a  
muro regolabile  
50 - 80 mm

gsv 04



H = 40 mm

| CODICE   | € pz. | Øi  | Øe  |   |
|----------|-------|-----|-----|---|
| M094100  | 16,90 | 60  | 100 | ✓ |
| M094125  | 18,67 | 80  | 125 | ✓ |
| M094150  | 20,61 | 100 | 150 | ✓ |
| M094200  | 25,31 | 130 | 200 | ✓ |
| M094200  | 25,31 | 150 | 200 | ✓ |
| M094250  | 28,81 | 200 | 250 | ✓ |
| MN094100 | 23,65 | 60  | 100 | ✓ |
| MN094125 | 26,13 | 80  | 125 | ✓ |
| MN094150 | 28,85 | 100 | 150 | ✓ |
| MN094200 | 35,44 | 130 | 200 | ✓ |
| MN094200 | 35,44 | 150 | 200 | ✓ |
| MN094250 | 40,34 | 200 | 250 | ✓ |

Coppia prolunghe per  
fascetta a muro

gsv 04



H = 40 mm

| CODICE    | € COPPIA | LUNGH. |   |
|-----------|----------|--------|---|
| M0930001  | 38,92    | 230 mm | ✓ |
| M0920002  | 48,46    | 480 mm | ✓ |
| MN0930001 | 54,49    | 230 mm | ✓ |
| MN0920002 | 67,84    | 480 mm | ✓ |

Distanziale  
regolabile per collare  
a muro

gsv 04



| CODICE    | € pz. | LUNGH. |   |
|-----------|-------|--------|---|
| M0930003  | 48,01 | 660 mm | ✓ |
| MN0930003 | 67,21 | 660 mm | ✓ |